

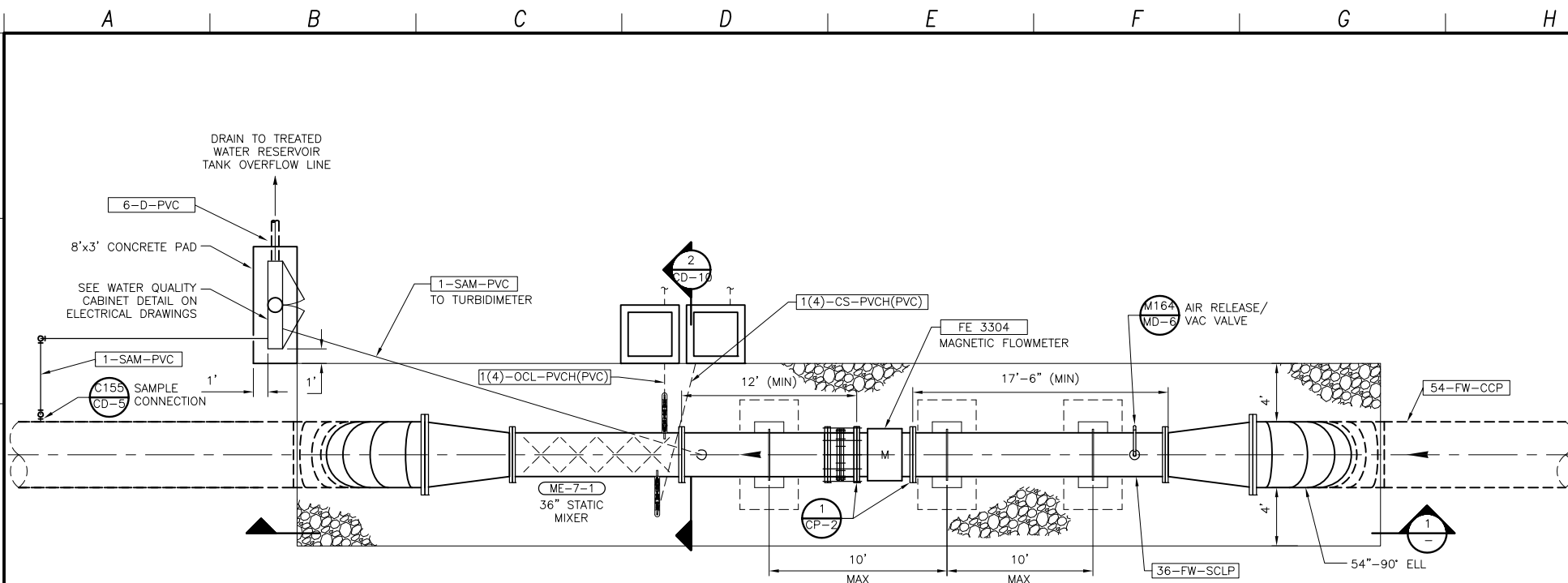
©2012 CDM SMITH ALL RIGHTS RESERVED. REUSE OF DOCUMENTS: THESE DOCUMENTS AND DESIGNS PROVIDED BY PROFESSIONAL SERVICE, INCORPORATED HEREIN, ARE THE PROPERTY OF CDM SMITH AND ARE NOT TO BE USED, IN WHOLE OR PART, FOR ANY OTHER PROJECT WITHOUT THE WRITTEN AUTHORIZATION OF CDM SMITH.

| A | | | | | | B | | | | | | C | | | | | | D | | | | | | E | | | | | | F | | | | | | G | | | | | | H | | | | | | I | | | | | | J | | | | | | K | | | | | | L | | | | | |
|------------------------------|------------|--------|-----------|----------|---------|-------|-----|----------|-----|------------|--------|-----------|----------|---------|-------|-----|----------|-----|------------|--------|-----------|----------|---------|-------|-----|----------|-----|------------|--------|-----------|----------|---------|-------|-----|----------|-----|------------|--------|-----------|----------|---------|-------|-----|----------|-----|------------|--------|-----------|----------|---------|-------|-----|----------|---|--|--|--|--|--|---|--|--|--|--|--|---|--|--|--|--|--|
| NO. | DEFLECTION | INVERT | ELEVATION | NORTHING | EASTING | NOTES | DWG | LOCATION | NO. | DEFLECTION | INVERT | ELEVATION | NORTHING | EASTING | NOTES | DWG | LOCATION | NO. | DEFLECTION | INVERT | ELEVATION | NORTHING | EASTING | NOTES | DWG | LOCATION | NO. | DEFLECTION | INVERT | ELEVATION | NORTHING | EASTING | NOTES | DWG | LOCATION | NO. | DEFLECTION | INVERT | ELEVATION | NORTHING | EASTING | NOTES | DWG | LOCATION | NO. | DEFLECTION | INVERT | ELEVATION | NORTHING | EASTING | NOTES | DWG | LOCATION | | | | | | | | | | | | | | | | | | |
| MISCELLANEOUS DRAINS | | | | | | | | | | | | | | | | | | | | | | | | | | | | | | | | | | | | | | | | | | | | | | | | | | | | | | | | | | | | | | | | | | | | | | | |
| SANITARY SEWER | | | | | | | | | | | | | | | | | | | | | | | | | | | | | | | | | | | | | | | | | | | | | | | | | | | | | | | | | | | | | | | | | | | | | | | |
| LIQUID PROPANE | | | | | | | | | | | | | | | | | | | | | | | | | | | | | | | | | | | | | | | | | | | | | | | | | | | | | | | | | | | | | | | | | | | | | | | |
| CHEMICAL FEED LINES | | | | | | | | | | | | | | | | | | | | | | | | | | | | | | | | | | | | | | | | | | | | | | | | | | | | | | | | | | | | | | | | | | | | | | | |
| AREA DRAINS | | | | | | | | | | | | | | | | | | | | | | | | | | | | | | | | | | | | | | | | | | | | | | | | | | | | | | | | | | | | | | | | | | | | | | | |
| SETTLED WATER | | | | | | | | | | | | | | | | | | | | | | | | | | | | | | | | | | | | | | | | | | | | | | | | | | | | | | | | | | | | | | | | | | | | | | | |
| TREATED WATER | | | | | | | | | | | | | | | | | | | | | | | | | | | | | | | | | | | | | | | | | | | | | | | | | | | | | | | | | | | | | | | | | | | | | | | |
| WID / RECLAIMED WATER | | | | | | | | | | | | | | | | | | | | | | | | | | | | | | | | | | | | | | | | | | | | | | | | | | | | | | | | | | | | | | | | | | | | | | | |
| ROOF DRAIN | | | | | | | | | | | | | | | | | | | | | | | | | | | | | | | | | | | | | | | | | | | | | | | | | | | | | | | | | | | | | | | | | | | | | | | |

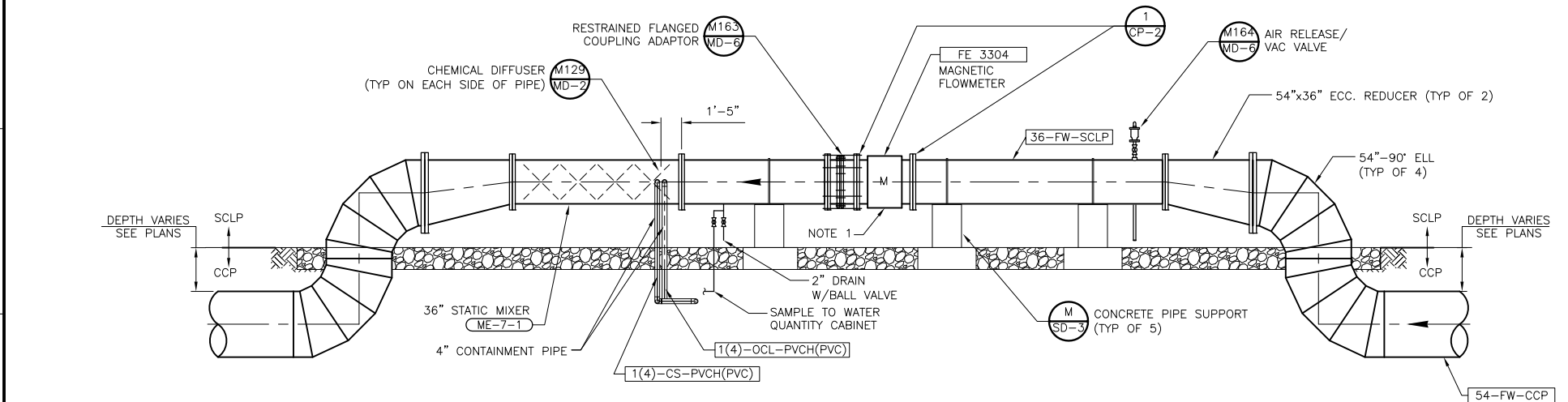
| | | | | | | | | | |
|--|--|---|---|---|--|------------------------------------|----------------------------------|-----------------------------|---|
| | | DESIGNED BY: J. NISHIMOTO DRAWN BY: R. UCHIMURA SHEET CHK'D BY: G. LINDSTADT CROSS CHK'D BY: J. NISHIMOTO APPROVED BY: G. LINDSTADT DATE: MARCH 2010 | One Walnut Creek Center 100 Pringle Ave., Suite 300 Walnut Creek, CA 94596 Tel: (925) 933-2900 | DEPARTMENT OF MUNICIPAL UTILITIES CITY OF STOCKTON, CALIFORNIA DATE: 9/2012 | 0 1/2 1 IF THIS BAR DOES NOT MEASURE 1" THEN ADJUST SCALE ACCORDINGLY | Delta Water Supply Project | DWSP WATER TREATMENT PLANT | YARD PIPING INVERT TABLE II | PROJECT NO. 5000-61732 FILE NAME: 61732S00C030 SHEET NO. C-30 |
|--|--|---|---|---|--|------------------------------------|----------------------------------|-----------------------------|---|

1
2
3
4
5
6
7
8

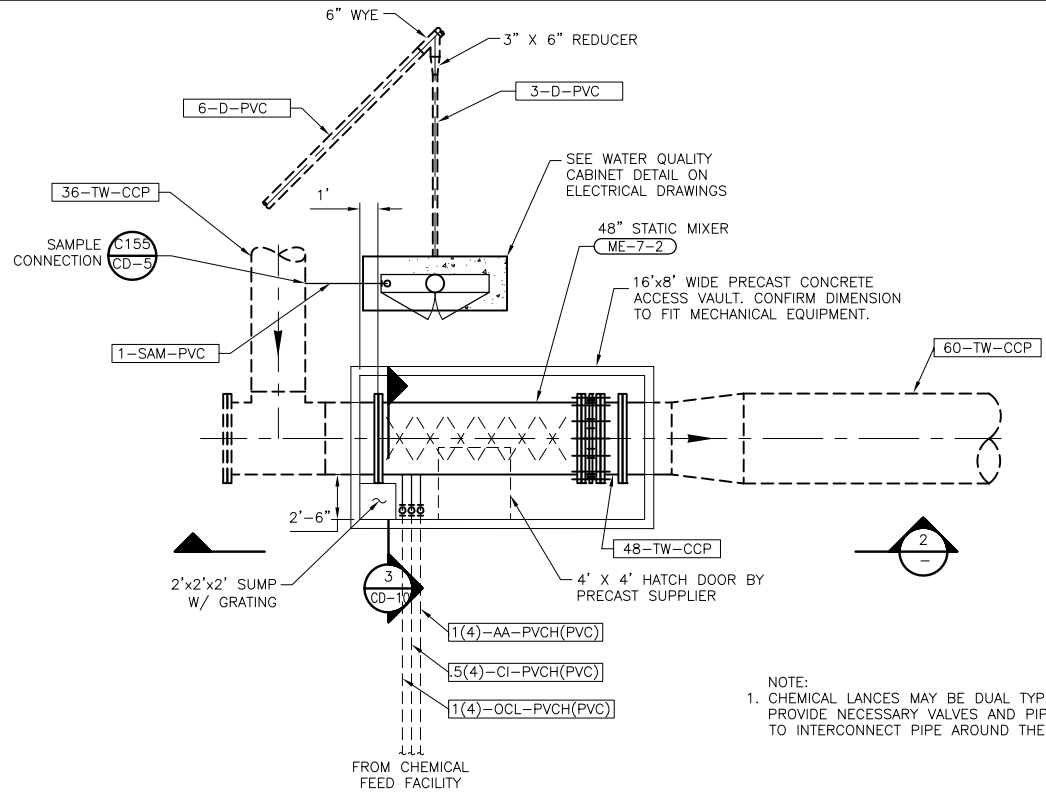
©2012 CDM SMITH ALL RIGHTS RESERVED. THESE DOCUMENTS AND DESIGNS PROVIDED BY PROFESSIONAL SERVICE, INCORPORATED HEREIN, ARE THE PROPERTY OF CDM SMITH AND ARE NOT TO BE USED, IN WHOLE OR PART, FOR ANY OTHER PROJECT WITHOUT THE WRITTEN AUTHORIZATION OF CDM SMITH.
 REUSE OF DOCUMENTS: THESE DOCUMENTS AND DESIGNS PROVIDED BY PROFESSIONAL SERVICE, INCORPORATED HEREIN, ARE THE PROPERTY OF CDM SMITH AND ARE NOT TO BE USED, IN WHOLE OR PART, FOR ANY OTHER PROJECT WITHOUT THE WRITTEN AUTHORIZATION OF CDM SMITH.
 N:\ACAD\2008\5000\61732\RecordDrawings\01-Sheets\02-Civ\61732S00C009 09/24/12 14:23.tbl\wk_xrefs\61732S00C009.dwg



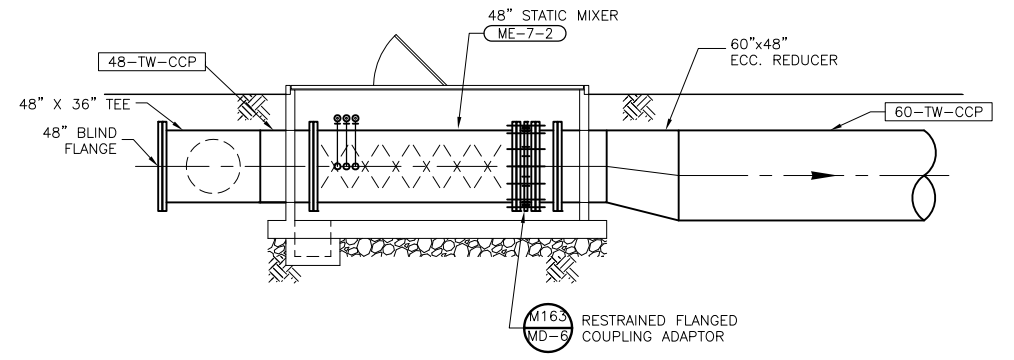
FILTERED WATER PLANT FLOWMETER
PLAN A
 3/16" = 1'-0" C-21



SECTION 1
 3/16" = 1'-0"



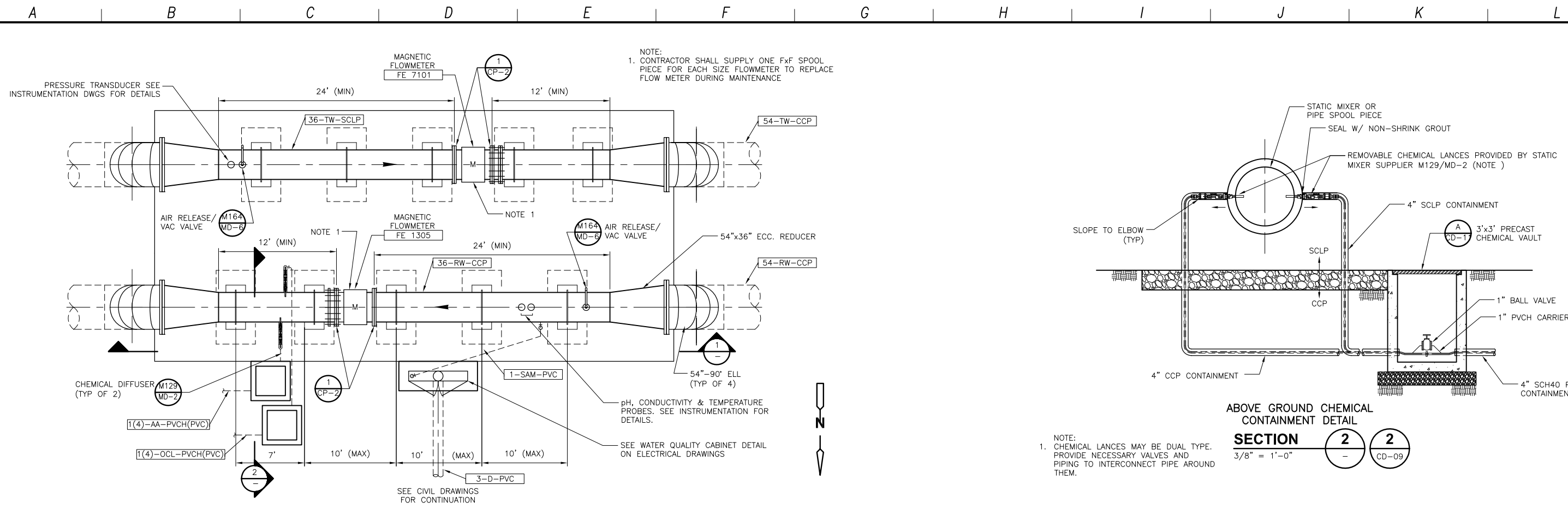
TREATED WATER CHEMICAL ADDITION
PLAN B
 3/16" = 1'-0" C-21



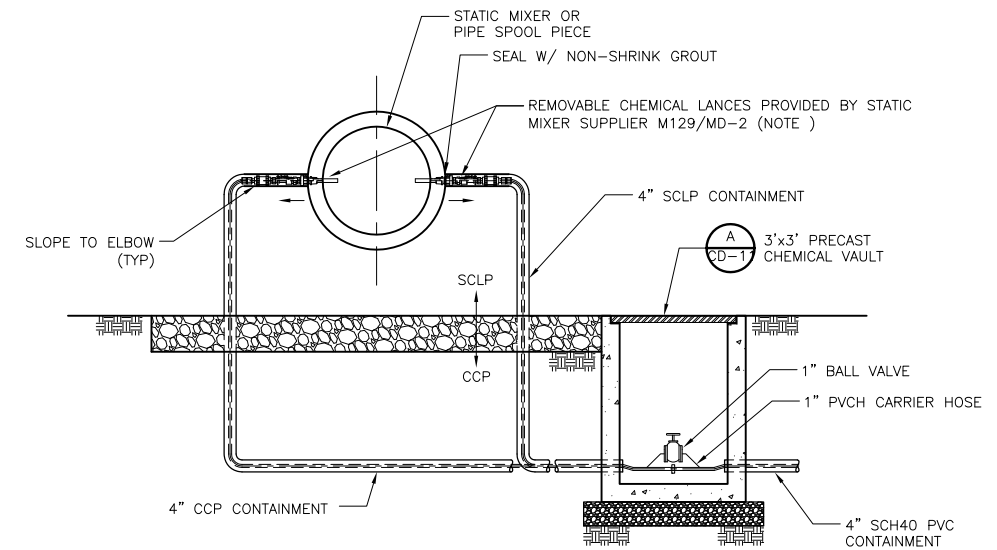
SECTION 2
 3/16" = 1'-0"

| | | | | | | | | |
|--|---|--|---|--|------|---|---|---|
| | RECORD DRAWINGS DESIGNED BY: J. NISHIMOTO DRAWN BY: R. UCHIMURA SHEET CHK'D BY: G. LINDSTADT CROSS CHK'D BY: J. NISHIMOTO APPROVED BY: C. LINDSTADT DATE: MARCH 2010 | One Walnut Creek Center 100 Pringle Ave, Suite 300 Walnut Creek, CA 94596 Tel: (925) 933-2900 | DEPARTMENT OF MUNICIPAL UTILITIES CITY OF STOCKTON, CALIFORNIA APVD: DATE: 9/2012 ENGINEERING MANAGER, DEPARTMENT OF MUNICIPAL UTILITIES | 0 1/2 1 IF THIS BAR DOES NOT MEASURE 1" THEN ADJUST SCALE ACCORDINGLY | | DWSP WATER TREATMENT PLANT | ADDITIONAL YARD PIPING DETAILS I | PROJECT NO. 5000-61732 FILE NAME: 61732S00C009 SHEET NO. CD-9 |
|--|---|--|---|--|------|---|---|---|

©2012 CDM SMITH ALL RIGHTS RESERVED. THESE DOCUMENTS AND DESIGNS PROVIDED BY PROFESSIONAL SERVICE, INCORPORATED HEREIN, ARE THE PROPERTY OF CDM SMITH AND ARE NOT TO BE USED, IN WHOLE OR PART, FOR ANY OTHER PROJECT WITHOUT THE WRITTEN AUTHORIZATION OF CDM SMITH. REUSE OF DOCUMENTS: THESE DOCUMENTS AND DESIGNS PROVIDED BY PROFESSIONAL SERVICE, INCORPORATED HEREIN, ARE THE PROPERTY OF CDM SMITH AND ARE NOT TO BE USED, IN WHOLE OR PART, FOR ANY OTHER PROJECT WITHOUT THE WRITTEN AUTHORIZATION OF CDM SMITH. N:\ACAD2008\5000\61732\RecordDrawings\01-Sheets\02-Civ\61732S00CD10 09/12/12 09:30 rushma XREFS: 61732XBorder, 61732XOCM300, Ca-gil

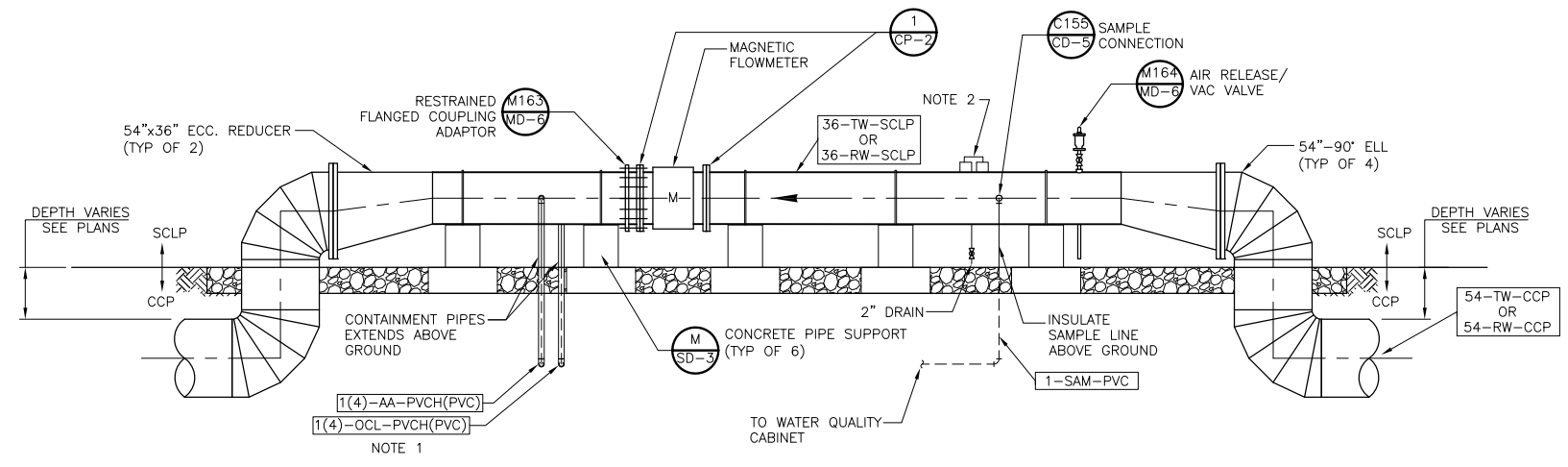


DELTA SUPPLY RAW WATER AND TREATED WATER PLANT FLOWMETERS
PLAN
 3/16" = 1'-0"

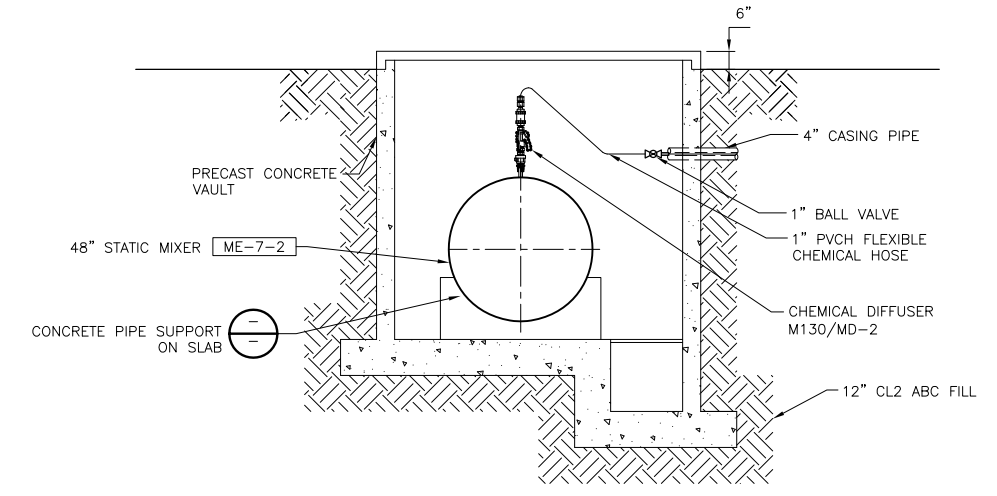


ABOVE GROUND CHEMICAL CONTAINMENT DETAIL
SECTION 2
 3/8" = 1'-0"

NOTE:
 1. CHEMICAL LANCES MAY BE DUAL TYPE. PROVIDE NECESSARY VALVES AND PIPING TO INTERCONNECT PIPE AROUND THEM.



SECTION 1
 3/16" = 1'-0"



SECTION 3
 3/8" = 1'-0"

- NOTES:**
- CHEMICAL ADDITION ONLY ON THE 54" RAW WATER LINE.
 - WATER QUALITY INSTRUMENTS ONLY ON 54" RAW WATER LINE. SEE INSTRUMENTATION DRAWINGS FOR EXACT LOCATIONS.

| | | | | | | | | | | |
|--|------------------------|---|--|---|--|--|--|-----------------------------------|--|--|
| | RECORD DRAWINGS | DESIGNED BY: J. NISHIMOTO DRAWN BY: R. UCHIMURA SHEET CHK'D BY: G. LINDSTADT CROSS CHK'D BY: J. NISHIMOTO APPROVED BY: C. LINDSTADT DATE: MARCH 2010 | | DEPARTMENT OF MUNICIPAL UTILITIES CITY OF STOCKTON, CALIFORNIA APVD: DATE: 9/2012 ENGINEERING MANAGER, DEPARTMENT OF MUNICIPAL UTILITIES | 0 1/2 1 IF THIS BAR DOES NOT MEASURE 1" THEN ADJUST SCALE ACCORDINGLY | | | DWSP WATER TREATMENT PLANT | ADDITIONAL YARD PIPING DETAILS II | PROJECT NO. 5000-61732 FILE NAME: 61732S00CD10 SHEET NO. CD-10 |
|--|------------------------|---|--|---|--|--|--|-----------------------------------|--|--|